
NEWARK TEACHERS UNION



WEEKLY UPDATE

January 27, 2023



LOCAL 481
AFT/AFL-CIO

NTU CONTRACT MEETING



NTU Executive Board

Join The Movement

Contract
Workshop
Part 2

We will be building on the work we started at the November meeting.
BRING A FRIEND OR TWO!

Saturday, February 25th @ 9AM
Holiday Inn, 160 Frontage Rd
Newark, NJ 07114

Breakfast will be provided!

Please RSVP at

<https://tinyurl.com/NTUFeb2023>

Please bring your NTU membership cards or Photo ID. Only NTU members will be admitted!



January 27, 2023

NEWARK TEACHERS UNION UPDATE



LOCAL 481
AFT/AFL-CIO

PRESIDENT'S REPORT



“The most important word in the language of the working class is solidarity.” -Harry Bridges, Founder of the International Longshore and Warehouse Union (ILWU)

Imagine a piece of twine. If you unravel that twine, you are left with several thin and flimsy individual strands that can easily be torn apart. But, when you braid those strands back together into one strong cohesive piece of twine, you end up with something far more durable and lasting. The whole is far stronger than the sum of its parts.

That is what organizing Union members is all about. I am sure this is an analogy you have heard before, but the reason things become clichés is because they will always be true. There is strength in numbers and in unity. That is why the district is so intent on creating divisions among different titles.

At a building level, therefore we constantly remind our Building Reps to have Building Committees that represent a range of titles and grade levels from across the building. When everyone is together, it becomes much harder for staff to get taken advantage of by a rogue administrator.

There is a great fear from many in power about the influence of Unionism, and the core of that is the sheer number of people standing together refusing to allow any one member to stand alone.

Important! The NTU’s next membership meeting is scheduled for February 25, 2023. We will be discussing the results of our Contract Survey and the next steps around organizing membership in preparation for negotiations. [Click here to RSVP!](#)

IN SOLIDARITY,

JOHN M. ABEIGON
PRESIDENT/DIRECTOR OF ORGANIZATION
NEWARK TEACHERS UNION LOCAL 481, AFT, AFL-CIO
JABEIGON@NEWARKTEACHERSUNION.COM

TRENDING THIS WEEK :

- [Secretary Treasurer Report pg. 4](#)
- [Union Plus – Shopping and Discounts – Pg. 5](#)
- [Kudos/Honoring Staff Members pg. 6-7](#)
- [Newark Art Mini Grants Pg. 8](#)
- [DO NOT WORK BEYOND YOUR CONTRACT HOURS! Pg. 9](#)
- [Unum Benefits pg 10](#)
- [NTU Scholarship Dinner pg. 11](#)
- [Prudential Center Pg 12](#)
- [NTU Ed Resource Center/Upcoming Events pg. 13](#)

<http://newark.nj.aft.org/>

From the Desk of the Secretary-Treasurer



When I first started teaching, 26 years ago, my lesson plan book was a planner, and I wrote in the box the size of a calendar box what I was doing each day, the objective(s) mostly because back then, that's what drove the lesson. If I put FOUR objectives on the board and got to three of them, that was a damn good lesson. I got better at managing my lessons then, because I was using created materials, with created objectives and all I had to focus on was making the CREATIVE activities to teach the content. Sometimes, I was struck with that TEACHABLE MOMENT! Yes, the long-dead, teachable moment. These were the most exciting moments as a teacher...that single moment when a student said something that you could seize upon, and use it to correct something, to teach a new concept, to expand on a student's interest, to bring excitement and energy to the lesson.

The Teachable Moment is DEAD. Dead and Buried courtesy of an evaluation framework that is exploited by administrators that do not use it as a means of instruction but as a tool of destruction. During an observation you embraced the teachable moment, some of our lesser intuitive admins WOULD DO THE FOLLOWING:



- Ding you for pacing and momentum!
- Ding you for lesson components!
- Ding you for not meeting success criteria!
- Ding you for lack of alignment!
- Ding you for not anticipating the student's concern/question!

How sad a state of affairs is this? How far astray from the art of teaching have we gone? We fight against this through SOLIDARITY, by being the artful and trained professionals we are, and pushing back. We need to reclaim our profession, and doing so starts with being active, mobile, responsive NTU members. See you on February 25th because the fight to change starts then.

Michael Iovino
Proud Educator
and
NTU Secretary Treasurer

IMPORTANT!

- EVALUATION FRAMEWORK
- REBUTTAL TIPS
- RSVP TO MANDATES
- MISSED PREP FORM
- SUPPLEMENTAL TIME REPORT



SHOPPING & DISCOUNTS

Join BeFrugal and get \$15 bonus

[Start Shopping](#)



How does BeFrugal work?

Earning cash back is super easy when you shop with BeFrugal.

1. Start browsing on BeFrugal to find your favorite stores – there are more than 5,000 online retailers to choose from.
2. Click on a coupon or the “Shop Now” button. You will be taken to the retailer’s website to complete your purchase as you normally would. The cash back you earn will then be automatically added to your BeFrugal account.
3. When you’re ready, you can request your cash via check, PayPal, direct deposit, Venmo, Zelle or gift card. It’s that easy

MORE WAYS TO SAVE!



[AT&T](#)



[Union Plus Credit Card](#)



[Car Rental](#)

WTTA Staff

MEMBER OF THE WEEK



Alexis Marlin-Blum

TEACHER SPECIAL EDUCATION & ENGLISH

Barringer High School

Ms. Marlin-Blum is the special education guru for the Barringer English Department! Not only does she make sure that her own lessons are engaging and meeting the needs of all of her students, but she also provides professional development for our department during PLCs to make sure all teachers understand how to tailor our lessons to ensure all students are achieving their goals.

Nominated by: Gina Jacobs



NTU STAFF MEMBER NOMINATION

don't miss it

It takes a team to help a school function effectively. Each and every one of you play an important role. Each week, in our NTU Update the NTU would like to recognize outstanding staff members that are going above and beyond.

To nominate an NTU member, please click the link or QR code.

click here!



SCAN ME



Jahki playing the piano, Keys 2 Success' New Music Commissions by Black Composers for Keyboard Ensembles, ArtStart Grantee 2021

ARTSTART MINI GRANTS



APPLICATIONS OPEN
JANUARY 30, 2023

ArtStart Info Session

January 31, 2023
6:00pm

newarkarts.org/artstart

Calling all members of the Newark Arts community! Are you an artist, organization or school in the Newark area that needs funding for an arts project that will positively impact our city?

Newark Arts' ArtStart Mini Grant Program provides a funding boost to organizations and individuals that create and/or manage music, dance, theatre, film, visual and literary art programs that benefit Newark residents and communities. Winning applications can receive up to \$3,000!

Applications for ArtStart will open on Monday, January 24, 2022.

Want to know more or need help with your application? RSVP now for the Zoom ArtStart 2022-23 Info Session
Tuesday, January 31, 2023, 6 pm



IMPORTANT REMINDER



TEACHERS, THERE'S NO
REQUIREMENT TO WORK BEYOND
YOUR CONTRACT HOURS.

YOU DON'T NEED TO HAVE
SOMETHING "BETTER" OR "MORE
IMPORTANT" TO DO IN ORDER TO
SET AND ENFORCE BOUNDARIES
ON YOUR TIME.

YOU ALSO DON'T OWE
ANYONE AN EXPLANATION.



WE TEACH
LET'S TALK



Newark Public Schools' Voluntary Benefits Enrollment Opportunity

Dear Newark Public Schools Employees,

As an employee of Newark Public Schools, you are invited to learn more about voluntary benefits available to you. For more information, please see <https://flimp.live/NewarkPublicSchools> or click the image below to launch a digital postcard in your web browser:

The Newark Public Schools is offering Unum Voluntary Benefits with guaranteed issue during this enrollment event.*

Take a moment to learn how these benefits can help protect your finances when you need it most. See below for more details.

Apply for coverage

Via Phone | (866) 752-7432

Enrollment ID | 170322

Open From 8 AM to 8 PM EST, M - F

*Guaranteed Issue (GI) refers to issuing a Voluntary Benefits policy/coverage without medical questions up to a certain amount of benefit. Benefits may be subject to a preexisting condition provision. Some restrictions and limitations may apply. For eligible employees only.

Get valuable financial protection now

LEARN MORE ABOUT YOUR ENROLLMENT



Critical Illness Insurance

This coverage can provide lump-sum benefits to help you manage the financial impacts of a serious illness or event, like cancer or a heart attack.

*THIS IS A LIMITED BENEFIT POLICY.



Accident Insurance

After an accidental injury, this coverage helps cover out-of-pocket expenses, so you can focus on recovery.

*THIS IS A LIMITED BENEFIT POLICY.



Short Term Disability Insurance

When you're unable to work due to a sickness or injury, this coverage can help replace a portion of your income temporarily if you become too sick or injured to work.

*THIS IS A LIMITED BENEFIT POLICY.



Life Insurance

This coverage provides financial protection during your working years or into retirement to help support loved ones in the event of your death.

*THIS IS A LIMITED BENEFIT POLICY.

For more plan information,
Please call (866) 752-7432

It is your responsibility to complete the benefits enrollment and confirm your elections for next plan year.



Albert Shanker

College Scholarship Program of the Newark Teacher's Union

REQUIREMENTS

1. Candidates must have parents or legal guardians who are NTU members.
2. Official documentation from the Registrar's Office indicating that you are matriculating at an accredited college, university, community college, technical or trade school at the time of the award. Graduate students are not eligible.
3. Application and all required materials must be received by Monday, April 24, 2023
4. Previous Albert Shanker Scholarship Award winners are ineligible.

AWARD CRITERIA

Awards will be based on academic achievement, school activities (ex: athletic, student government, clubs, music, etc.), character, leadership skills, community service, and career goals.

The NTU scholarship committee will judge applications anonymously.

*Deadline
is
April 24*

APPLY
NOW

PRUDENTIAL CENTER

THE PRUDENTIAL CENTER HAS SENT US A DISCOUNT CODE FOR UPCOMING JURASSIC WORLD LIVE AND MONSTER JAM SHOWS. WHEN YOU GO TO THE BELOW LINKS, YOU NEED TO CLICK ON "UNLOCK" AND ENTER THE CODE NTU481 TO UNLOCK THESE SEATS.



JURASSIC WORLD LIVE

FRIDAY, MARCH 3, 7 PM

SATURDAY, MARCH 4, 7 PM

SUNDAY, MARCH 5, 7 PM

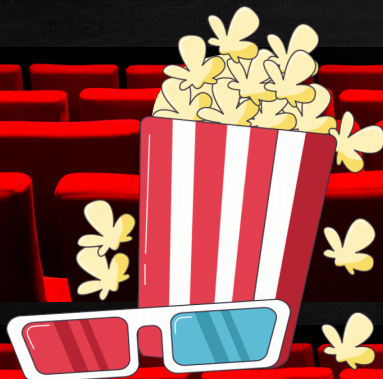


MONSTER JAM



FRIDAY, JANUARY 27, 2023, 7 PM

SATURDAY, JANUARY 28, 2023, 7 PM



NTU ED RESOURCE CENTER



The NTU Education Resource Center has a new **FULL COLOR POSTER PRINTER** and new **LAMINATORS** available for our members to use. **We do charge nominal fees to cover the cost of the materials.**

For best results, bring in a hardcopy or a PDF on a thumb drive for the poster printer.

Our Resource Center is open from
3:30 PM to 5:30 PM
Monday through Thursday.

1019 Broad Street, 1st Floor
Newark, NJ



IMPORTANT DATES



- WEDNESDAY, FEBRUARY 1 - NTU REP MEETING (RESCHEDULED) - 3:45 PM
- WEDNESDAY, FEBRUARY 1 - STAFF DEVELOPMENT DAY
- THURSDAY, FEBRUARY 16 - PARENT TEACHER CONFERENCE
- MONDAY, FEBRUARY 20 - PRESIDENT'S DAY HOLIDAY (SCHOOL CLOSED)
- TUESDAY, FEBRUARY 21 - NBOE BUSINESS MEETING, 6 PM
- TUESDAY, FEBRUARY 21 - NTU EXECUTIVE BOARD MEETING
- WEDNESDAY, FEBRUARY 22 - NTU BUILDING REP MEETING, 3:45 pm
- THURSDAY, FEBRUARY 23 - NBOE MEETING, 6 PM

PLEASE NOTE THAT FEBRUARY 17 AND FEBRUARY 21 ARE THE WORK DAYS BEFORE OR AFTER A HOLIDAY. TO ENSURE THAT YOU GET PAID FOR THE HOLIDAY BREAK, YOU MUST TAKE A PERSONAL DAY IF YOU ARE GOING TO BE ABSENT ON ANY OF THOSE DAYS.

YOU CAN TAKE A SICK DAY ON THOSE DAYS AS LONG AS IT IS PART OF AN APPROVED MEDICAL LEAVE. UNLESS IT IS PART OF AN EXTENDED FMLA, YOU MUST SUBMIT A MEDICAL CERTIFICATE TO NBOE OFFICE OF ADMINISTRATIVE SERVICES WITHIN 3 DAYS OF YOUR RETURN TO WORK.

EDITORIAL STAFF

MIKE MAILLARO

MMAILARO@NEWARKTEACHERSUNION.COM

SILVIA PERIERA

SPERIERA@NEWARKTEACHERSUNION.COM

**ASSISTANT TO
SECRETARY/TREASURER**
SUBRINA SCREVEN

SSCREVEN@NEWARKTEACHERSUNION.COM

GENERAL COUNSEL

EUGENE LISS

LISSLAW@HOTMAIL.COM

EDUCATION RESOURCE DEPARTMENT

AWILDA RODRIGUEZ

JOHANNA RIOS

ERC@NEWARKTEACHERSUNION.COM

PART-TIME STAFF REP

ROBERT PALUMBO

RPALUMBO@NEWARKTEACHERSUNION.COM

OFFICE STAFF

JANAE TAYLOR-LOYAS

JTAYLORLOYAS@NEWARKTEACHERSUNION.COM

SECURITY/MAINTENANCE
JAMES SANTIAGO

NEWARK TEACHERS UNION
LOCAL 481, AFT, AFL-CIO

3RD FLOOR
1019 BROAD STREET
NEWARK, NJ 07102
PHONE: 973-643-8430
FAX: 973-643-8435
FAX: 973-242-5880

[HTTP://NEWARK.NJ.AFT.ORG](http://NEWARK.NJ.AFT.ORG)

EXECUTIVE BOARD

JOHN M. ABEIGON
PRESIDENT/DIRECTOR OF
ORGANIZATION

MICHAEL IOVINO
SECRETARY/TREASURER

VICE PRESIDENTS

VICTOR AFONSO
NOOR ALAM
CRISTINA BALBOA-CAMACHO
CHRIS CANIK
RONNIE D. CARNEY
TIMOTHY CARR
CASSANDRA CHAPMAN- TALMADGE
JOHN CUNHA
MARK DONETZ
JOSEPHINE DONNELLAN
KRISTYN FAISON
JOICKI FLOYD
LOVE GAILLARD
FRANCISCO GARCIA
NANCY J. GIANNI
YVETTE JORDAN
CARMEN LOPEZ WOLF
ELAINA MAFFUCCI RICCARDI
KATHLEEN MURPHY-BUTLER
SILVIA PEREIRA
JENNIFER RAMOS
MARISA RODRIGUEZ
RYAN SANDOR
LARRY SULLIVAN
JANAE TAYLOR-LOYAS
GUADALUPE VELAZQUEZ
TENNILLE WASEK

The NTU's 2022 Annual Financial Statement is available upon request at the NTU offices by appointment. Email sscreven@newarkteachersunion.com